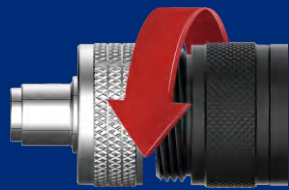


VTE-29D-S VTE-42D-S Power Tube Expander



Quick Connect Head



VB207C
Type-C Rechargeable Battery

7.2V
LITHIUM **2.0**
Ah

Effortless, Quick & Accurate Expanding

- One-button operation
- Automatic pressure relief
- Quick connect heads
- Large capacity lithium battery
- Complete an expansion in 10 seconds
- Up to 220 expansions per charge
- Quick charge in 35 minutes
- Innovative head design minimizing 3/8" tube splitting
- Battery power indicator
- LED flash light

Model	VTE-29D-S	VTE-42D-S
Battery	7.2V Li-battery	7.2V Li-battery
Applicable Pipe	Copper pipe	Copper pipe
Tubing O.D.	1/4", 3/8", 1/2", 5/8", 3/4", 7/8", 1", 1-1/8"	1/4", 3/8", 1/2", 5/8", 3/4", 7/8", 1", 1-1/8", 1-1/4", 1-3/8", 1-1/2", 1-5/8"
Dimensions	302x104x242 mm	302x104x242 mm
Weight	2.5 kg (with battery)	4 kg (with battery)